

BALUSTRADES

The Crealco NewYork is an aluminium balustrade system that gives you peace of mind when used on balconies or similar applications.

Add a bit of style to your home when choosing the Crealco NewYork balustrade with the option of either decorative glass panels or aesthetically pleasing powder coated aluminium profiles.

Features:

- Customised design
- Designed to comply to the National Building Regulations of South Africa
- Aesthetically pleasing yet strong and durable
- Heavy duty stanchion available with end cap

Glazing:

- Clear or tinted safety glass may be used for optimal viewing

Gaskets & Seals:

- High quality Crealco gaskets available
- Affordable and durable

Finish:

- Available in a variety of popular architectural powder coating colour and finishes

Hardware:

- Designed to accommodate Crealco components
- End caps available to suit various hand rails



BALUSTRADES

Typical Configurations

Configurations with either glass panels or square tube railings are available



Various hand rail options to choose from



One of the New York hand rails with end caps to match

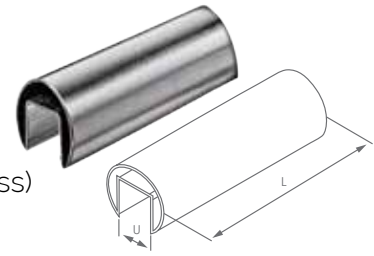


GLASS BALUSTRADES

Balustrade Handrails And Fittings

U-channel Handrail

- 42mm diameter
- 304 Grade Stainless Steel
- Excludes rubber profile (available for 8–11mm glass or 11–13mm glass)
- Material: Stainless Steel
- Available colours: 316 Grade Polished and Satin Stainless Steel ■



Accessories

IN-LINE CONNECTOR
For 42mm diameter
handrail channel



90° FLUSH ELBOW
For 42mm diameter
handrail channel



RUBBER PROFILE
For U-Channel handrail
For 10–13mm glass



Stainless steel has many unique values that make it a powerful candidate in material selection for balustrade handrails and fittings.



GLASS BALUSTRADES

Handrail Bracket

Glass mount
For 38mm or 50mm
diameter round tube



Handrail Bracket

Wall mount
For 38mm or 50mm
diameter round tube



Wall Flange

For 42mm diameter
handrail channel



End-cap

For 42mm diameter
handrail channel
Available in:
Polished and Satin
Stainless Steel Finish



Balustrade Support Clamp

50mm diameter x 12mm
Material:
304 Grade Stainless Steel
Available in:
Satin Stainless Steel Finish



STAND-OFF BOLTS

Side-mount Balustrade Fittings

48mm diameter x 50mm
Requires 12mm threaded rod
(Not supplied by GHI)
Material:

304 Grade and 316 Grade Satin
Stainless Steel
Available colours:
Polished and Satin Stainless
Steel Finish



STAND-OFF BOLTS

Side-mount Balustrade Fittings

38mm diameter x 38mm
Requires 10mm threaded rod
(Not supplied by GHI)
Material:

304 and 316 Grade Satin
Stainless Steel
Available colours:
Polished and Satin Stainless
Steel Finish



SPIGOTS

Top-mount Spigot With Cover Plate

Material:
2205 Marine Grade Stainless Steel
Cover Plate is included
No holes required on glass / panel